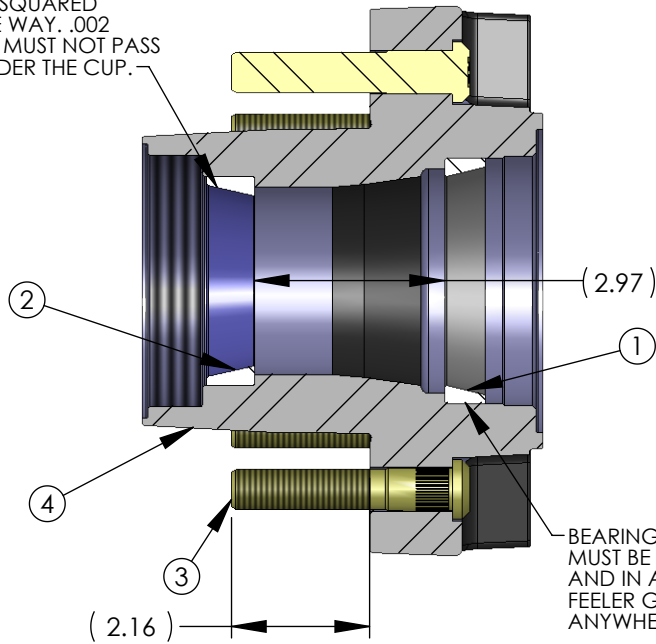


NOTES:

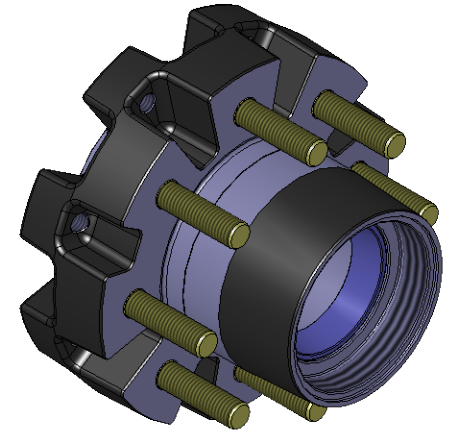
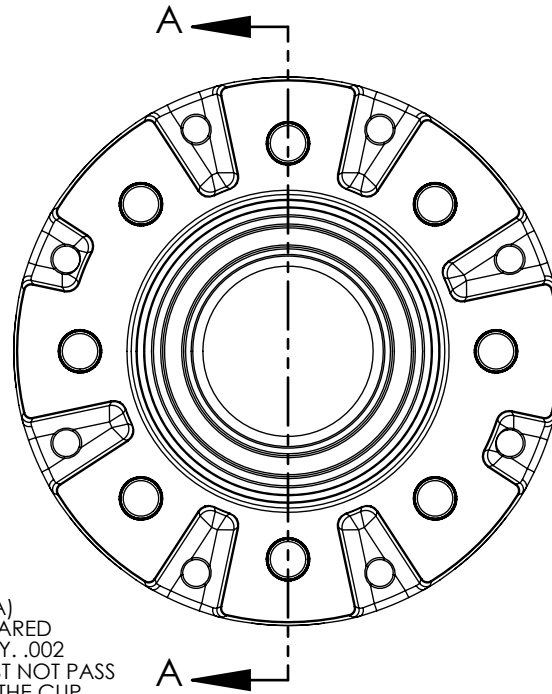
1. PAINT PER ES-035

		REVISIONS		CA	DWR	APVD
REV.	DATE	DESCRIPTION				
C	11/23/2015	ENOVIA CLEANUP: REPLACED 183168 SLDPRT WITH 404664 SLDPRT.		FCN-SP-DE-16446	CSK	SH
D	5/16/2017	SEPARATED CASTING/MACHINING FROM ASSY		CA-0077319	PH	BB
E	5/31/2019	UPDATED STUD (183128)		CA-00016000	PH	BB

BEARING CUP (25520)
MUST BE PRESS SQUARED
AND IN ALL THE WAY. .002
FEELER GAUGE MUST NOT PASS
ANYWHERE UNDER THE CUP.



SECTION A-A



ITEM	PART NO.	CONFIG	DESCRIPTION	NAME	GA	QTY
1	183463	Default	BEARING CUP/RACE - 382A	BEARING		1
2	124287	Default	BEARING - CUP/RACE - 25520	BEARING		1
3	183128	Default	STUD - 5/8-18 X 3.44 - .689 KNURL - YZ	FASTEN		8
4	404664	Default	IDLER HUB - CASTING/MACHINING - 865 - 10K	HUB		1

TITLE:

IDLER HUB - 865-5/8 - 10K

UNLESS OTHERWISE SPECIFIED
1. ALL DIMENSIONS ARE IN INCHES
2. BREAK SHARP EDGES & DEBURR
3. MATERIAL & FINISH TO BE AS NOTED
OR SUBSTITUTED WITH AN APPROVED
AND TESTED EQUIVALENT

TOLERANCES
(EXCEPT AS NOTED)

DECIMAL .X ±.1
.XX ±.03
.XXX ±.015

FILLETS R.015

FINISH: ✓

THIRD ANGLE PROJECTION



FRACTIONAL ±1/16

ANGULAR ±1°



**LIPPERT
COMPONENTS**

THE INFORMATION CONTAINED IN THIS DRAWING IS THE SOLE PROPERTY OF
LIPPERT COMPONENTS, INC. ANY REPRODUCTION IN PART OR AS A WHOLE WITHOUT THE WRITTEN
PERMISSION OF LIPPERT COMPONENTS, INC. IS PROHIBITED.

DWG. NO.

183168

SIZE

A

DATE:

5/23/2008

SCALE:

1:3

REV.

E

DRAWN BY
SRD

CHECKED BY
SRD

APPROVED BY

SHEET **1** OF **1**

REFERENCE NUMBER:
MATERIAL TYPE:
SURFACE QUALITY:
DECIMAL:
FNH GOOD WEIGHT: 33.00
BLANK WEIGHT:
BLANK SIZE: