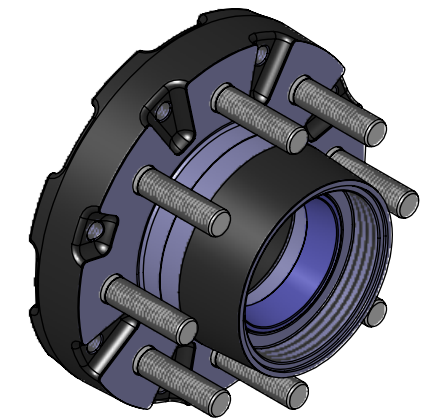
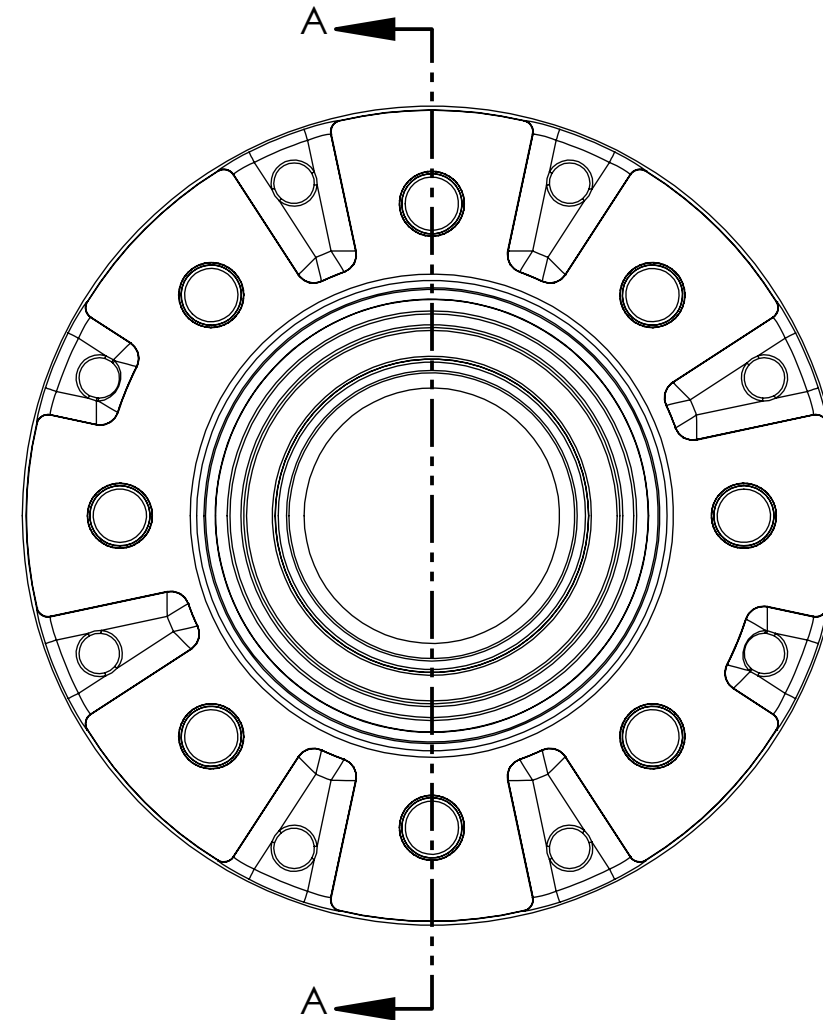
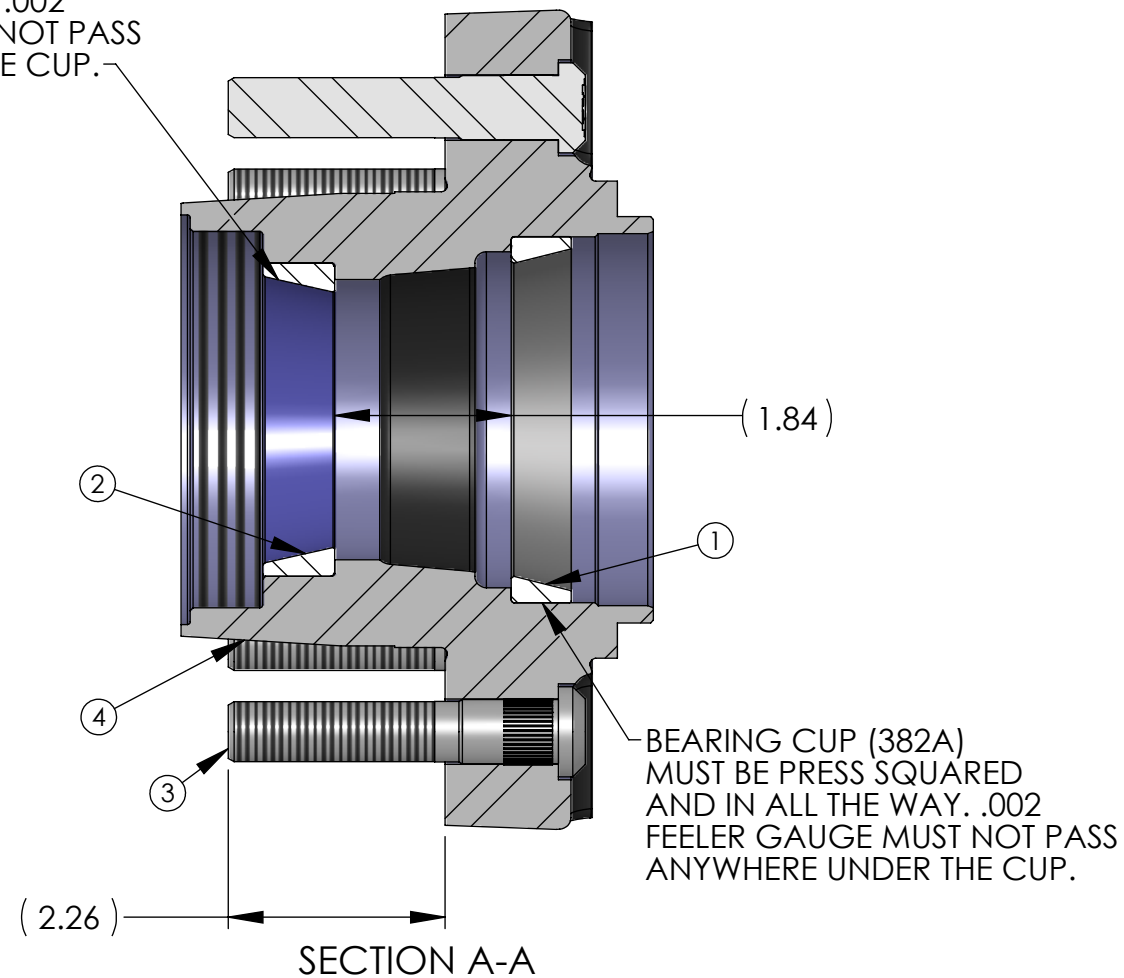


NOTES:

1. PAINT PER ES-035

REVISION HISTORY					
REV	DATE	DESCRIPTION	CA	DWR	APVD
A	3/13/2019	RELEASED TO PRODUCTION	CA-00004559	PH	BB
B	6/3/2019	UPDATED STUD (183128)	CA-00016024	PH	BB
C	7/7/2025	UPDATED SHEET FORMAT; SHEET SIZE WAS A; UPDATED COMPONENTS TO LATEST REVISION	CA-00292135	DCA	BAB

BEARING CUP (25520)
MUST BE PRESS SQUARED
AND IN ALL THE WAY. .002
FEELER GAUGE MUST NOT PASS
ANYWHERE UNDER THE CUP.



ITEM	PART NO.	CONFIG	DESCRIPTION	NAME	GA	QTY
1	183463	Default	BEARING CUP/RACE - 382A	BEARING		1
2	124287	Default	BEARING - CUP/RACE - 25520	BEARING		1
3	183128	Default	STUD - 5/8-18 X 3.44 - .689 KNURL - ZN	FASTEN		8
4	791396	Default	IDLER HUB - CASTING/MACHINING - 865 - 10K SHORT	HUB		1

TITLE: IDLER HUB - 865-5/8 - 10K SHORT

REFERENCE NUMBER:	
MATERIAL TYPE:	
SURFACE QUALITY:	
NOM. MATERIAL THICKNESS: (EXCEPT AS NOTED)	
FINISH GOOD WEIGHT:	25.55
BLANK WEIGHT:	
BLANK SIZE:	

UNLESS OTHERWISE SPECIFIED 1. ALL DIMENSIONS ARE IN INCHES 2. BREAK SHARP EDGES & DEBURR 3. MATERIAL & FINISH TO BE AS NOTED OR SUBSTITUTED WITH AN APPROVED AND TESTED EQUIVALENT		TOLERANCES (EXCEPT AS NOTED)	THE INFORMATION CONTAINED IN THIS DRAWING IS THE SOLE PROPERTY OF LIPPERT. ANY REPRODUCTION IN PART OR AS A WHOLE WITHOUT THE WRITTEN PERMISSION OF LIPPERT IS PROHIBITED.	LIPPERT TM			
FILLETS R.015	FINISH ✓	DECIMAL .X ±.1 .XX ±.03 .XXX ±.015				DWG. NO. 791398	SIZE B
THIRD ANGLE PROJECTION 		FRACTIONAL ±1/16 ANGULAR ±1°		ENGINEER PH	DRAFTSMAN PH	APPROVED BY	SHEET 1 OF 1